

Table Of Contents

Table Of Contents	1
eegdetecttrigl	2
CRNL	4



Published on *elan* (<http://elan.lyon.inserm.fr>)

[Home](#) > [Printer-friendly PDF](#) > [Printer-friendly PDF](#)

eegdetecttrigl

- **Description**

Detects square pulses of a given duration on a channel of an **.eeg** file and creates events. Events are stored in a **.eeg** EEG file containing all channels. They may be extracted later with [eegpos](#) [1] to create a **.pos** text event file.

- **Usage**

eegdetecttrigl myeegfilein.eeg myparameterfile.par myeegfileout.eeg
with :

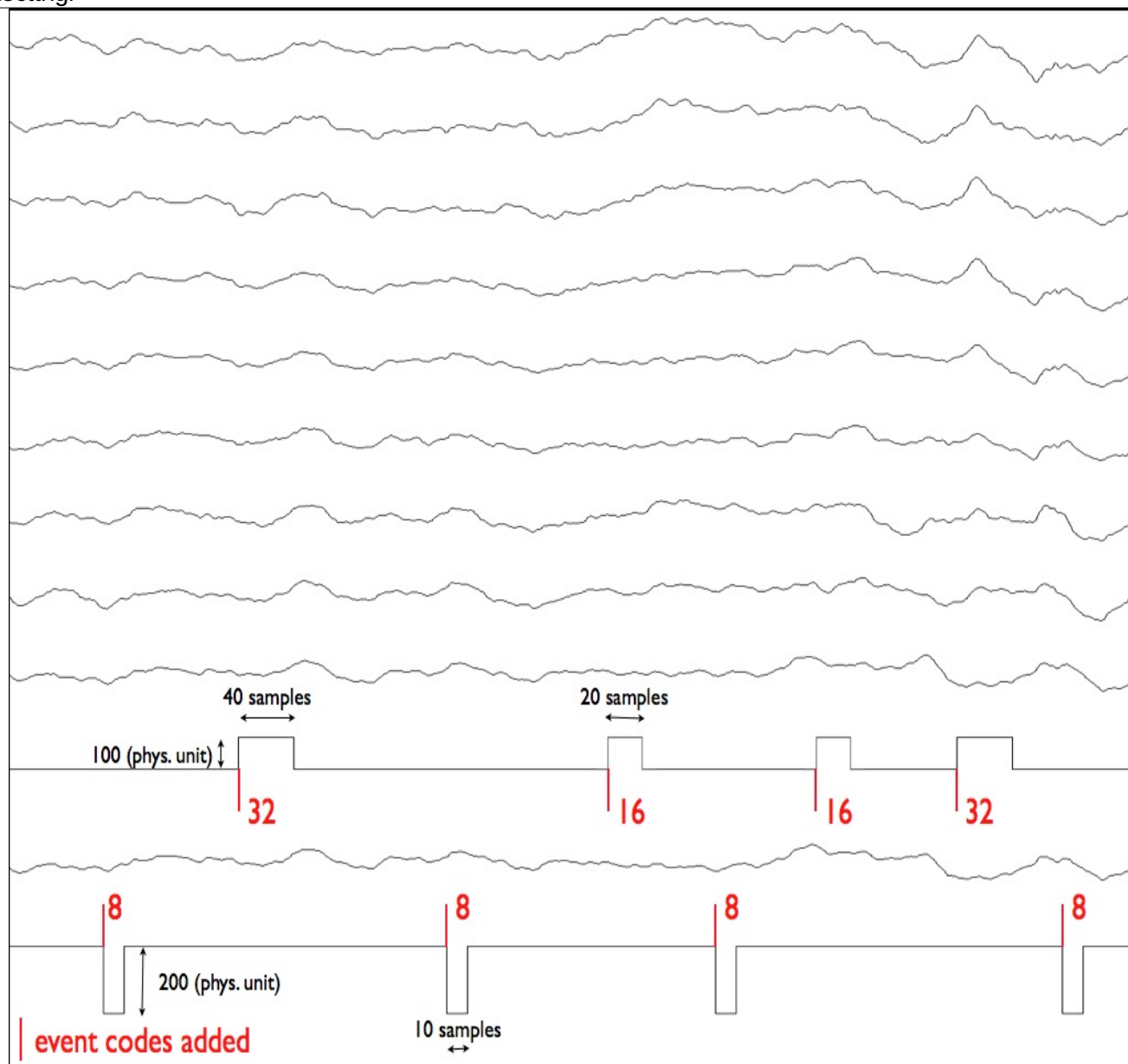
- myeegfilein.eeg : input EEG file to process (with extension).
- myparameterfile.par : input event file (with extension) used to define epochs.
- myeegfileout.eeg : output EEG file (with extension).

- **Fields of parameter file and examples**

trigger_chan_nb 2	Number of channel containing square pulses to detect.
trigger_chan_list 10 12	List of channel ranks containing the pulses to detect. The 1st channel has indice 1.
trigger_threshold 100 200	List of the amplitude threshold to detect square pulses, in physical units, for each channel.
trigger_edge 1 -1	List of the edge parameters to detect triggers. Possible values are : 1 : rising edge. -1 : falling edge.
trigger_nb 3	Number of triggers of different durations.
trigger_duration 10 20 40	Trigger durations (in samples) for each trigger type.
trigger_code 8 16 32	Trigger codes to store in EEG file for each trigger type.

- **Example**

The following picture illustrates the above parameter file :



[2]

- **Comments**

- **Current version**

1.03 29-09-2010

- **History**

- 1.02 13-01-2004 (PEA) : 1st documented version.
- 1.03 29-09-2010 (PEA) : update to use cmake and free release of Elan. Remove static allocation for reading EEG file header.

- **Files**

\$ELANPATH/bin/eegdetecttrigl

- **See also**

[Attachment](#) [Size](#)

fig_eegdetecttrigl.png [2] 101.75 KB

Lyon Neuroscience Research Center - Brain Dynamic and Cognition team

CRNL



Source URL: <http://elan.lyon.inserm.fr/?q=eegdetecttrigl>

Links:

[1] <http://elan.lyon.inserm.fr/?q=eegpos>

[2] http://elan.lyon.inserm.fr/sites/default/files/fig_eegdetecttrigl.png